

SMART COMMAND

by **CAROMA**

Revision: 0

Date: 30/10/2024

Supersedes all previous issues

Wall Outlet Tapware

Electronic Hands-Free, Bluetooth® Enabled, Low-Flow



Wall Outlet Tapware Low Flow



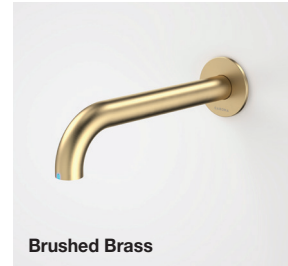
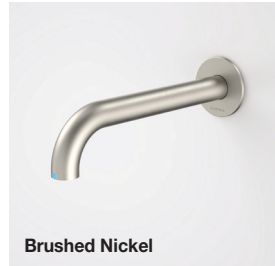
- Trim kit and In wall Rough in kit included
- Slimline design featuring low flow for the ultimate design focused sustainability solution.
- Accurate and reliable time of flight sensors to detect hands & minimise accidental activation.
- Prominent reassurance LED displaying three separate colour modes (Cold/Warm/Hot).
- Advanced self-configuring tap understands the surrounding surfaces and alters setting appropriately.
- Touch free activation for improved hygiene.
- Data capture from Tapware activations correlated with sanitaryware use provides insight into hygiene practices at any given time.
- BlueTooth enabled for direct access from a smart device and communication to Caroma Smart Command Cloud.
- Connected Smart tap enables quick configuration of operating parameters, testing of fixture status and usage review via Caroma Smart Command Cloud, Mobile App or through a BMS system.
- Hard wearing, low maintenance and solid lead free brass construction.

Smart Command™ Wall Outlet Tapware

Low Flow	Code No.
Chrome	98500C6AF-KIT
Matte Black	98500B6AF-KIT
Gunmetal	98500GM6AFSMO-KIT
Brushed Nickel	98500BN6AF-KIT
Brushed Brass	98500BB6AFSMO-KIT
Rough-In Kit	98499F

- Outlet:** Flowrate: 1.5 Litre per minute. WELS 6 Star.
- Hygienic Flush:** Hygienic flush every 24 hours (optional).
- Electronic Valve:** The operating voltage of the valve is 6 volts DC.
- Electronics:** Supply voltage to the system is 240V AC 50Hz. Operating current 6 volts DC.
- Installation:** Single Temperature, Male DN15 (G1/2") water connection.
For general electrical connection install a plug socket 240V AC.

Also available in the following colour options:



All dimensions are in millimetres and are subject to normal manufacturing variations.
Caroma pursues a policy of continuing improvement in design and performance of its products.
The right is therefore reserved to vary specifications without notice.

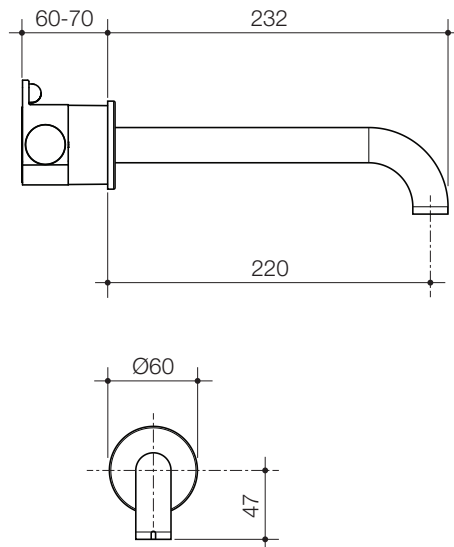


Figure 1: Overall Dimensions

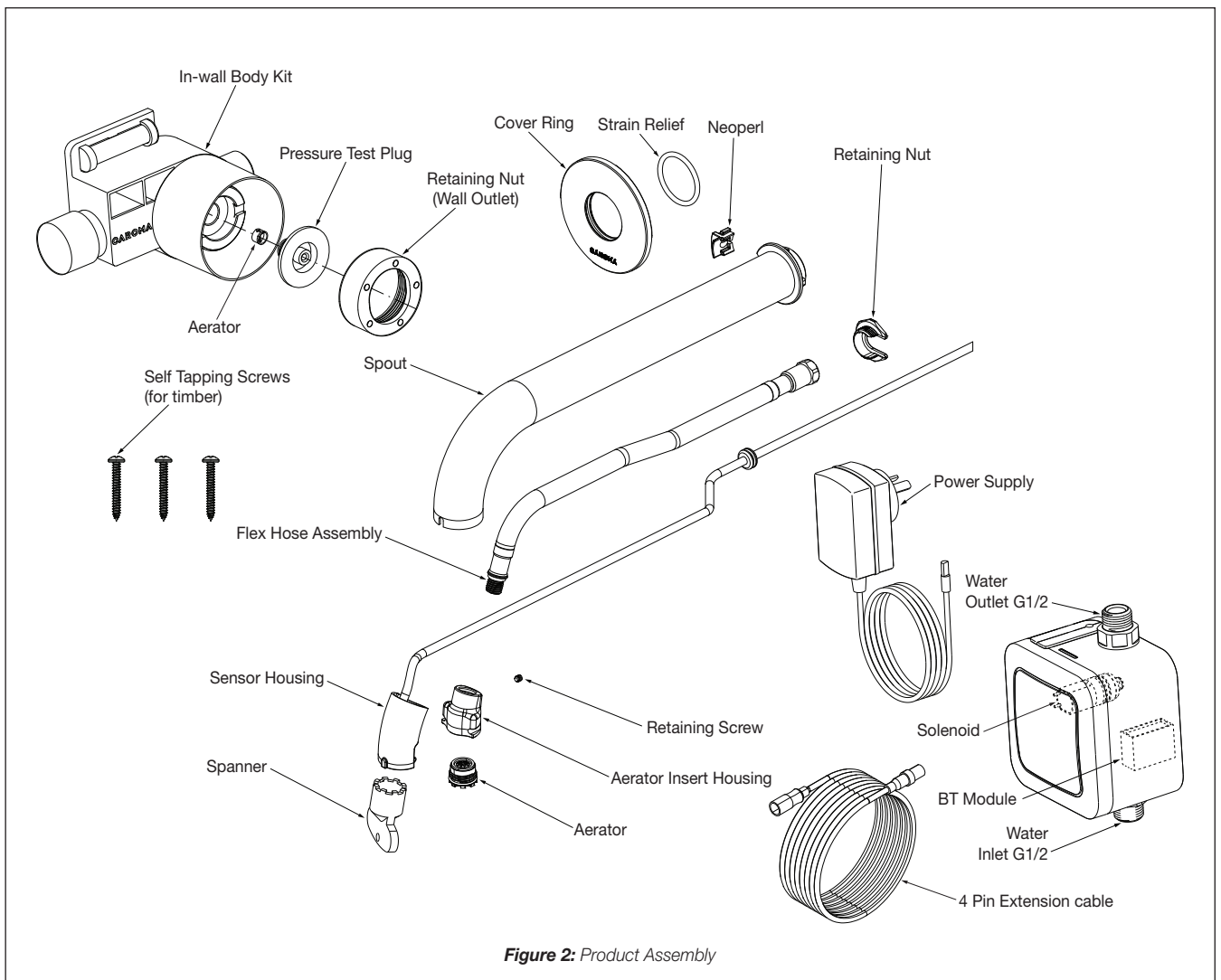


Figure 2: Product Assembly

SMART COMMAND <small>by CAROMA</small>	Technical Data Wall Outlet Tapware
Ethernet Gateway Dimensions	Width 211mm x Distance to Centre of Outlet: 236mm x Height: 50mm
Flowrate	1.5 Litre per minute. WELS 6 Star
Power Supply	Wall mounted power pack (supplied)
Sensor Type	TOF (time of flight)
Maximum Power Consumption	20mA
Pressure Requirements	Static inlet pressure range: 150 - 800kPa New regulation: -500kPa maximum static pressure
Maximum Temperature	80°C
Plug Pack Input	240V AC 50/60 Hz
Plug Pack Output	6V DC
Ambient Temperature	0°C...60°C
BMS Connection Type	BMS Connection via Caroma Smart Command connective hardware
Communication Protocol	Bluetooth 5.0
Power Supply EMC Approvals	CE, C-Tick and FCC
Power Supply Safety Approvals	RCM, UL, CUL, TUV, GS, SAA, CE and CB
Power Supply Safety Compliance	AS/NZS 60950, UL 60950, EN 60950, IEC 60950
ROHS Compliance	EN50581:2012
EMC Compliance	EN 301 489-1 V2.1.1, EN 300 328 V2.1.1, EN623111, EN62368-1: 2014, AS/NZS CISPR 32:2015 (ITE Class B)
Electrical Safety Compliance	IEC 60950-1, UL 60950-1, CSA C22.2 60950-1
Complies with EC Directives	RoHS2 Directive 2011/65/EU, Waste Electrical and Electronic Equipment (WEEE) Directive 2002/96/EC, Registration, Evaluation, Authorisation and Restriction of Chemicals (REACH) Directive, Conflict Minerals Directive
IMPORTANT INFORMATION	<p>Do not install this unit facing a mirror or any other electronic system operated by an infra-red sensor. To prevent reflection problems, it is recommended to keep a minimum distance of 1.5m between the sensor outlet and any other objects. Wearing high-vis clothing in front of the sensor can also cause accidental sensor activation.</p> <p>Trim kit (3-28) and body kit (1-2) are supplied separately.</p> <p>Not suitable for gravity feed systems.</p> <p>All pipework must be thoroughly flushed prior to installation, as foreign materials may block the solenoid or flow regulating device and reduce the flow of water.</p>